

# Installation Instructions | IBT PRECON

## 1. Installation on the formwork

### Attachment by magnet

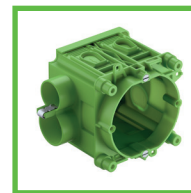
**Socket P71 GRD-O**  
**Large conduit box P71 GRO-O**  
**Equipment junction box P71 GVD-O**

- a) Place the magnet on the formwork
- b) Place the socket on the magnet



Magnet

+



Open socket front  
for use with various  
products, including  
Ratec (art. nr. 04304)

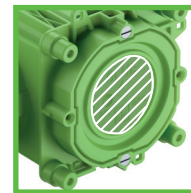
### Adhesive attachment

**Socket P71 GRD-K**  
**Large conduit box P71 GRO-K**  
**Equipment junction box P71 GVD-K**

- a) Apply the hot-melt adhesive to the compartments provided for this purpose
- b) Turn the junction box over and bond it to the formwork



Hot-melt adhesive  
gun



Apply the hot-melt  
adhesive here

### Magnetic clamp attachment

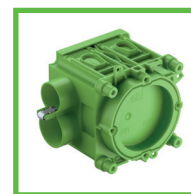
**Socket P71 GRD**  
**Large conduit box P71 GRO**  
**Equipment junction box P71 GVD**

- a) Place the magnetic clamp (HM-UN) on the formwork
- b) Place the socket on the magnet



HM-UNI  
Magnetic clamp  
50 mm Ø  
(art. nr. 979 299 01)

+



Junction box  
P71 GVD

## 2. Conduit adapters

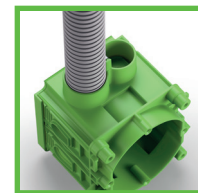
### With integral conduit adapter

#### Large conduit box P71 GRO Equipment junction box P71 GVD

- a) Break out the conduit membrane with a screw driver
- b) Push the conduit into the combi-conduit opening up to the conduit stop



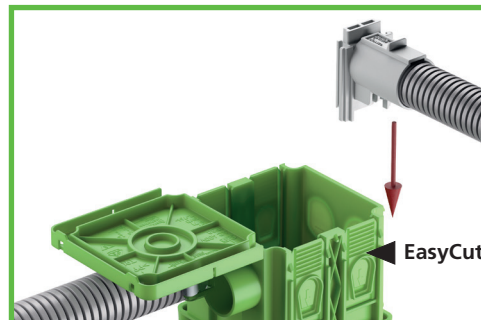
a)



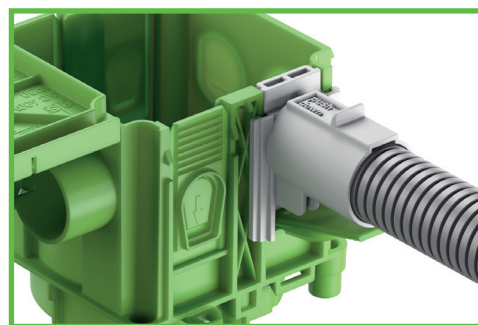
b)

### With functional conduit adapter (conduit adaption - no tools needed)

- a) Insert the conduit into the conduit adapter up to the stop
- b) Place the conduit adapter on the EasyCut membrane and press downwards (until it clicks into place)
- c) Close the cover with an audible click



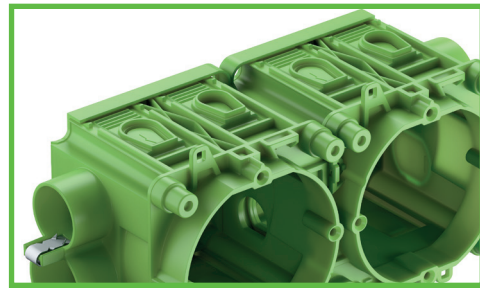
EasyCut Membrane



### 3. Combining and through-wiring

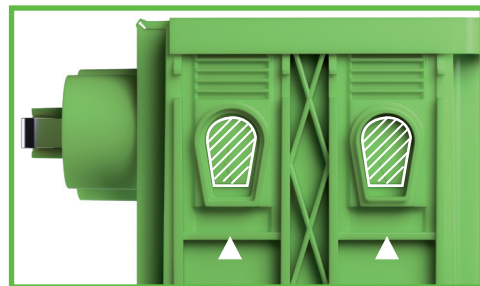
#### Combining

The **IBT Precon boxes** can be combined with each other by means of the integral snap-fit connections.

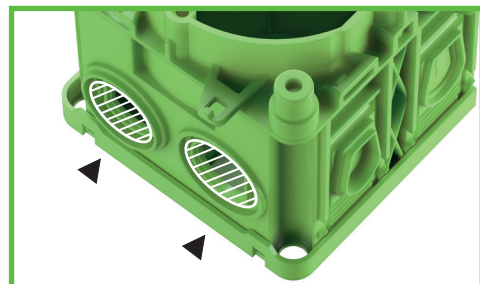


#### Through-wiring

The disposable membranes are broken out with a screwdriver.



Disposable membranes



Disposable membranes